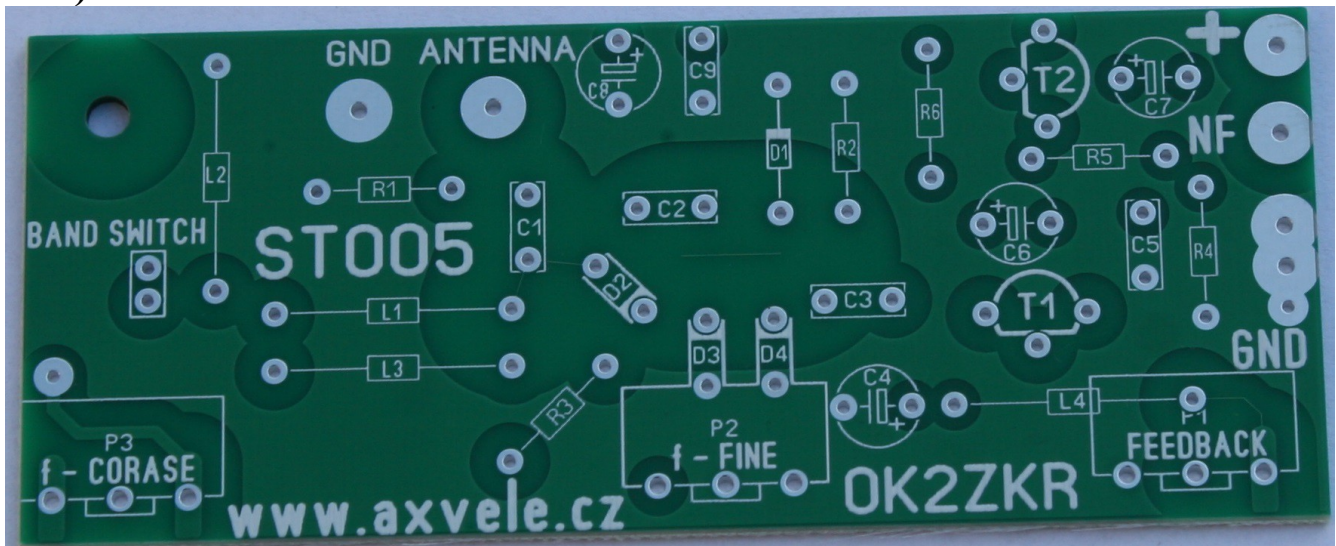


ST005 DETAIL KIT ASSEMBLY MANUAL

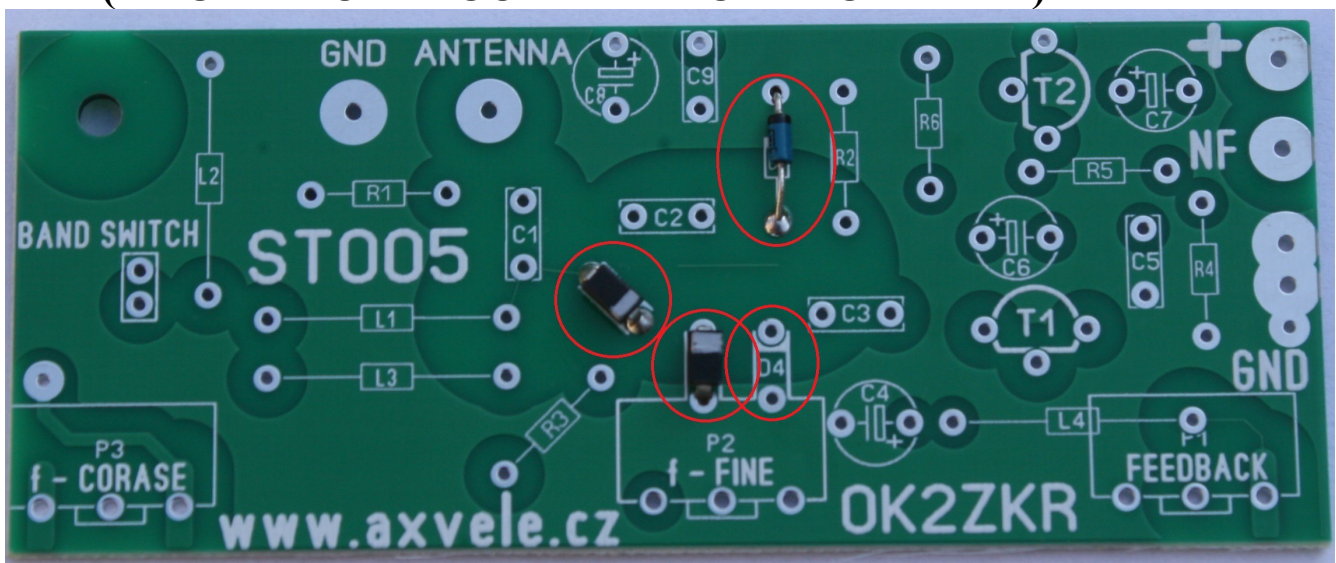
(VARIANT ST005_HF_80m + 60m + 40m)

**OTHER VARIANTS ARE WITH DIFFERENT VALUES OF
L1, L2, L3, C1, D2, D3, D4**

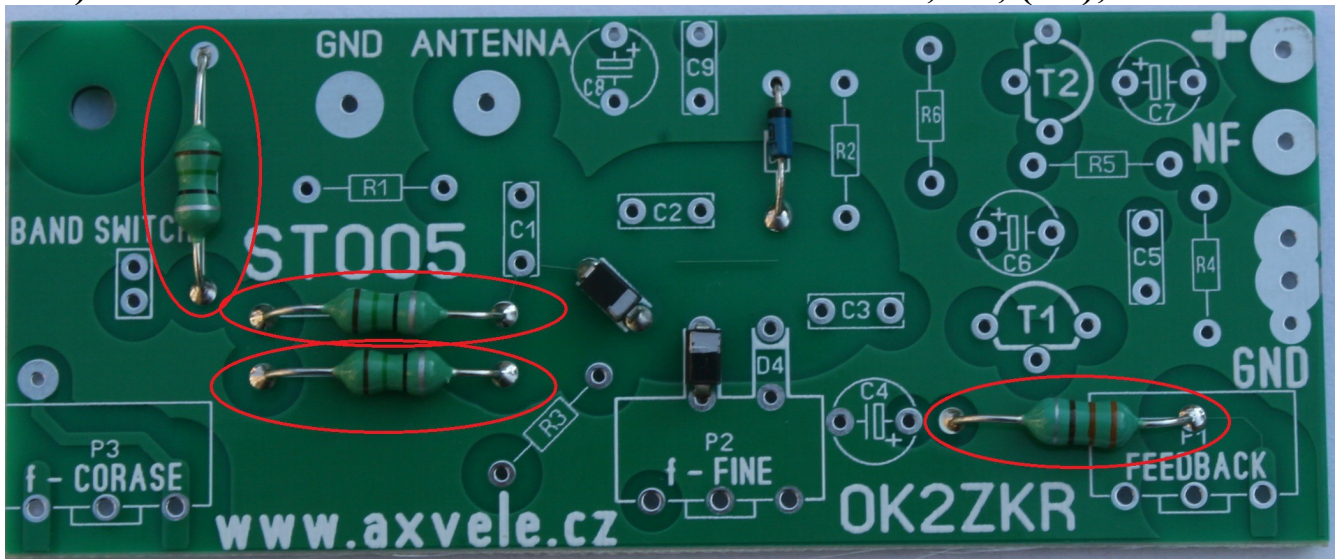
1) NOT ASSEMBLED PCB



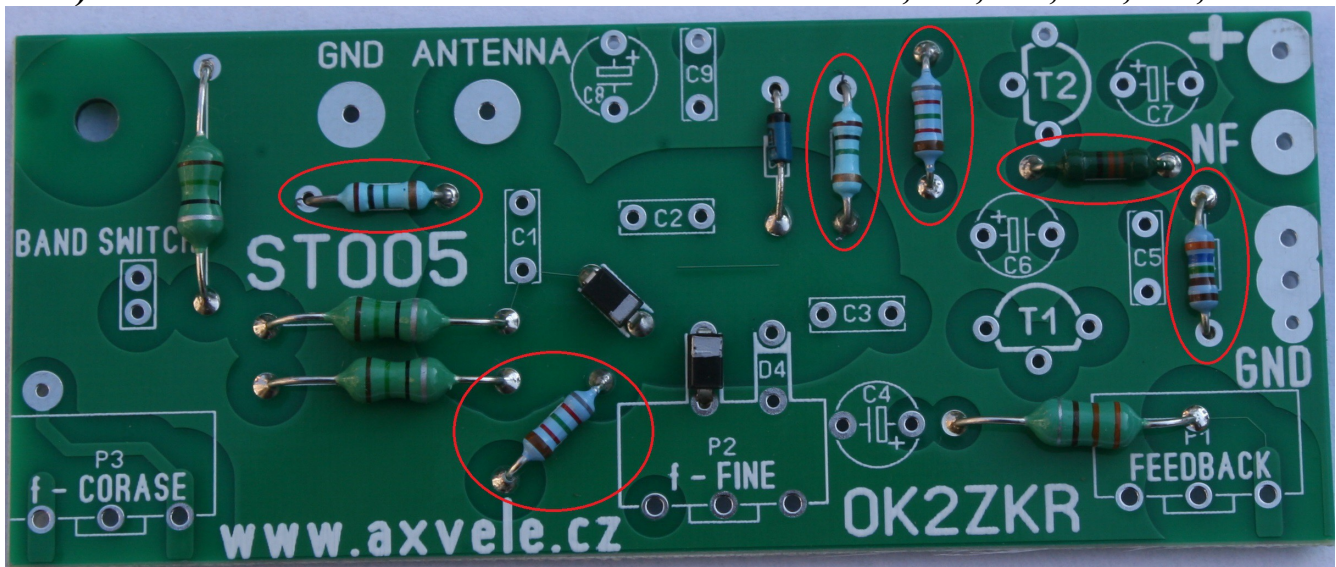
2) PCB WITH ASSEMBLED DIODES D1, D2, D3, (D4) (BE CAREFUL ABOUT THE DIODE POLARITY)



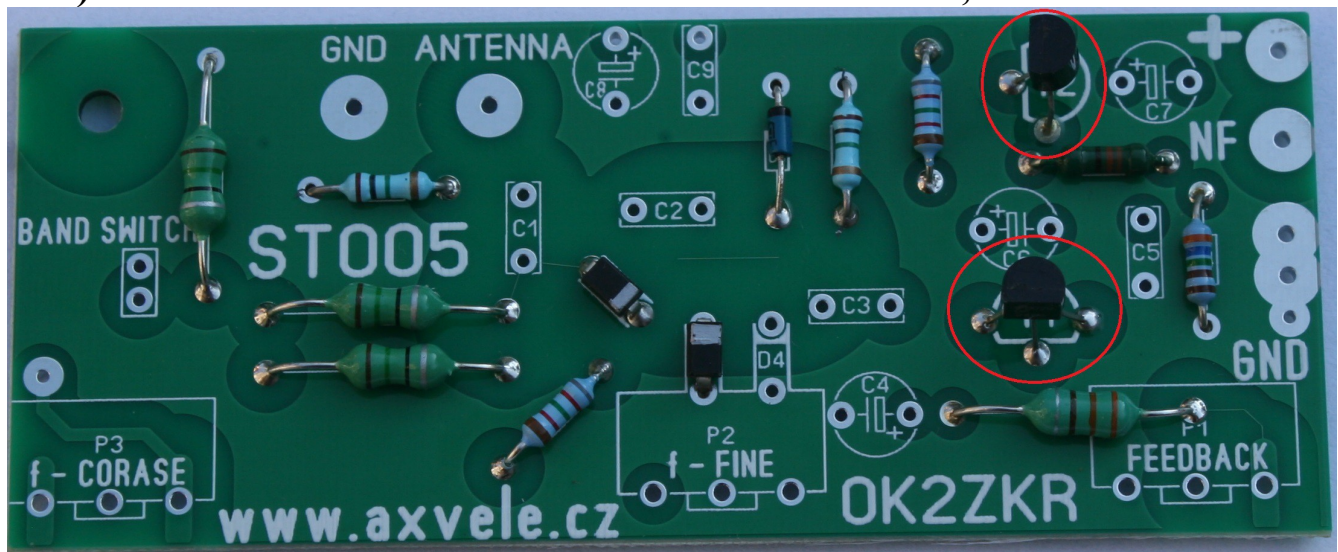
3) PCB WITH ASSEMBLED INDUCTORS L1, L2, (L3), L4



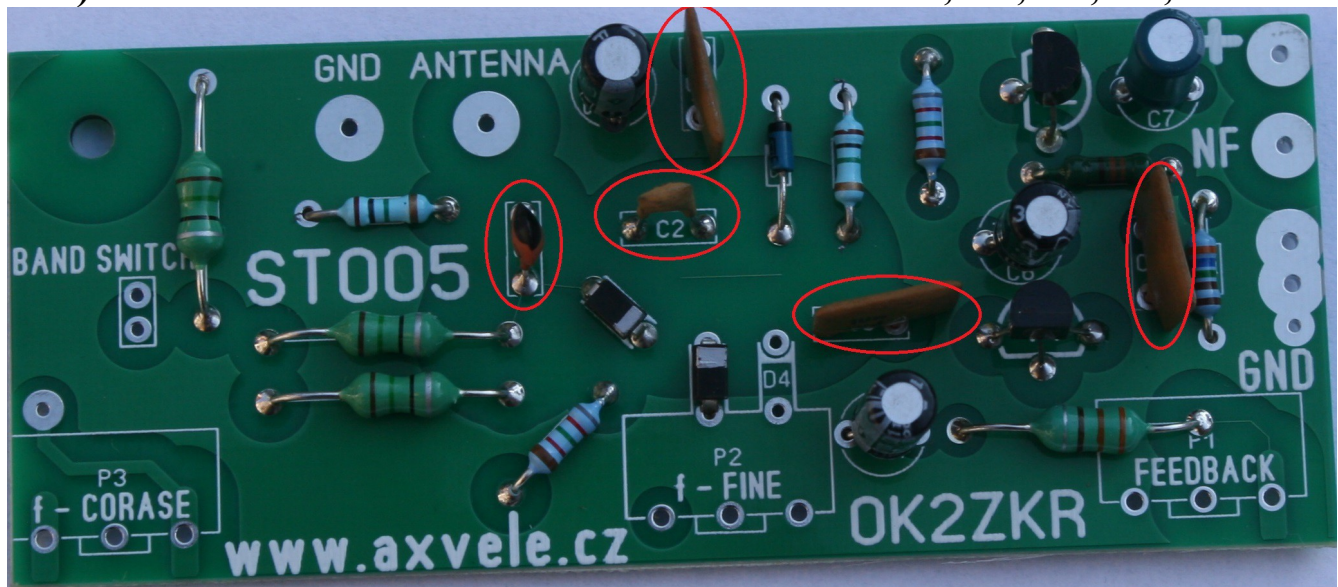
4) PCB WITH ASSEMBLED RESISTORS R1, R2, R3, R4, R5, R6



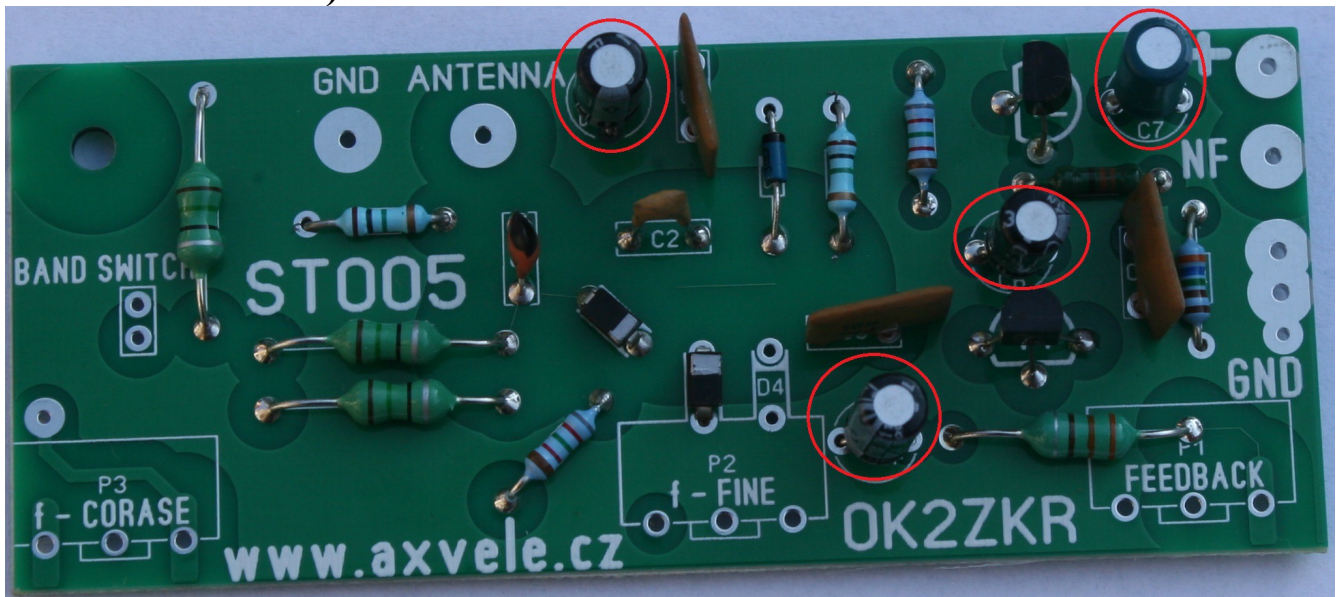
5) PCB WITH ASSEMBLED TRANSISTORS T1, T2



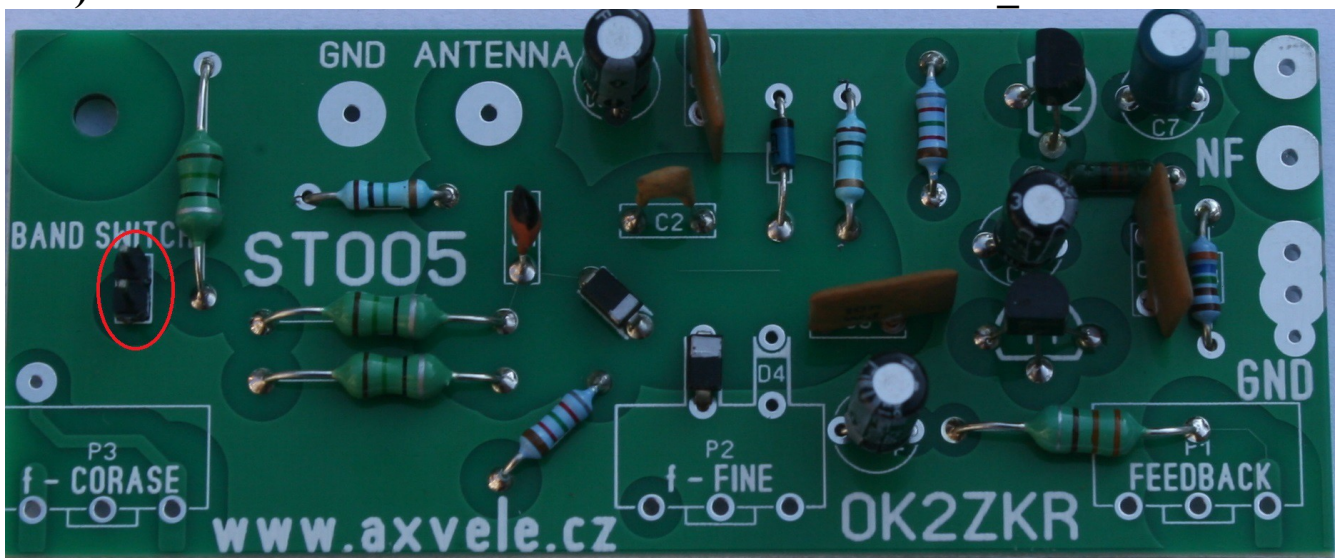
6) PCB WITH ASSEMBLED CAPACITORS C1, C2, C3, C5, C9



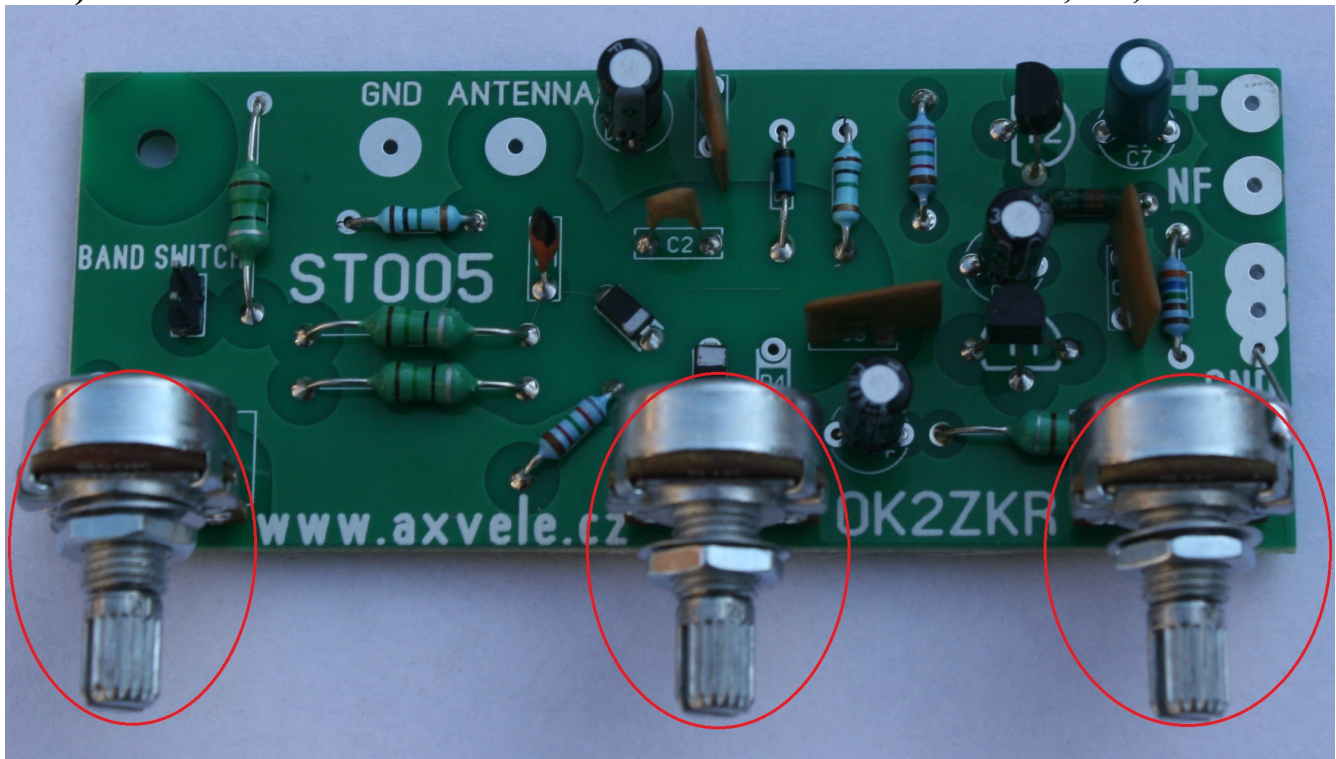
**7) PCB WITH ASSEMBLED CAPACITORS C4, C6, C7, C8
(BE CAREFUL ABOUT ELECTROLYTIC CAPACITORS
POLARITY)**



8) PCB WITH ASSEMBLED PIN HEADER BAND_SWITCH



9) PCB WITH ASSEMBLED POTENTIOMETERS P1, P2, P3



10) CONNECTION OF P1 COVER TO GND

